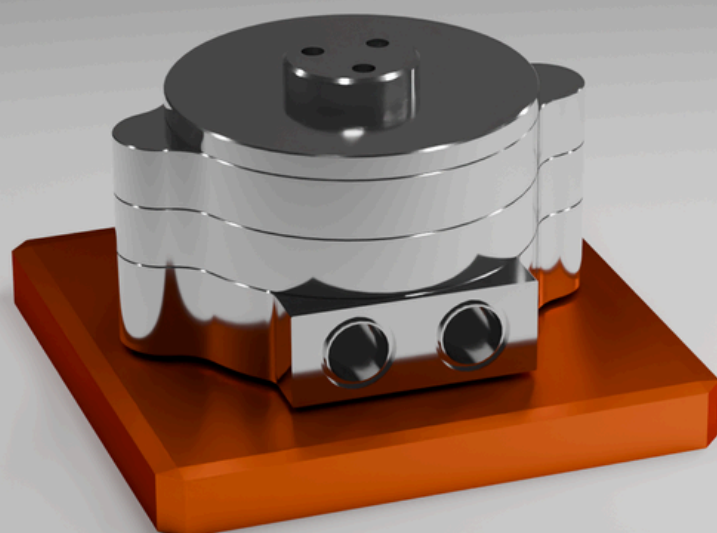




SpinPro R2 Reactor

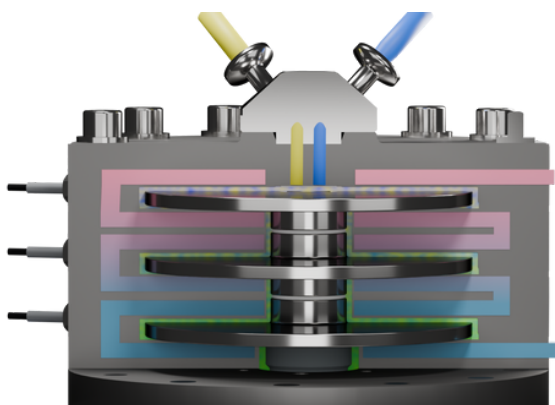




SpinPro R2 Reactor

SpinPro Dynamic Flow Reactors

SpinPro reactors are a unique type of flow reactors. They enable the independent control of mixing intensity and throughput. The spinning disc in a narrow housing generates strong and homogeneous shear with a high turbulence intensity, shortening production times from hours in batch to seconds in flow.



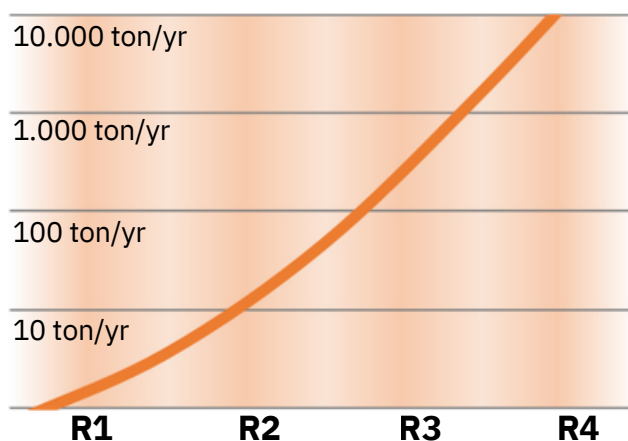
Technical Specifications SpinPro R2

| | |
|-----------------|------------------|
| Pressure: | up to 10 barg |
| Temperature: | –20 °C to 140 °C |
| Reactor volume: | 15 mL |
| Material: | Hastelloy |

Proven Technologies

Over fifty SpinPro reactors are running in lab setups and pilot plants worldwide, making this your ideal solution for:

- Multiphase reactions (GLS)
- Precipitations and slurries
- Highly exothermic reactions
- Emulsification & polymerisation



Excellent Scalability

The SpinPro reactor range expedites scale-up from R&D to production. Constant performance is maintained during scale-up from R1 to R4.