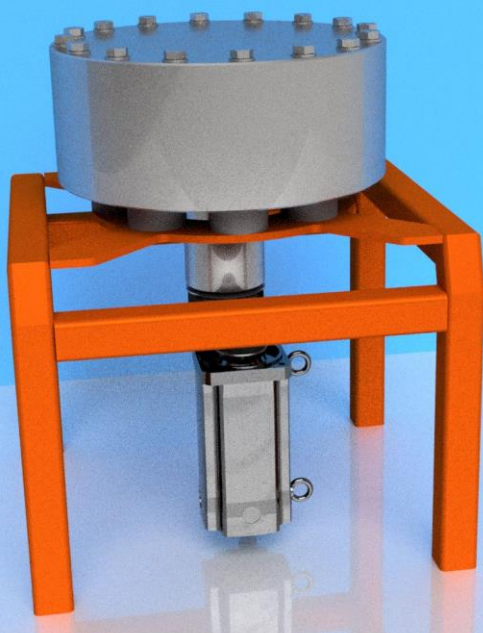




SpinPro R4 Reactor

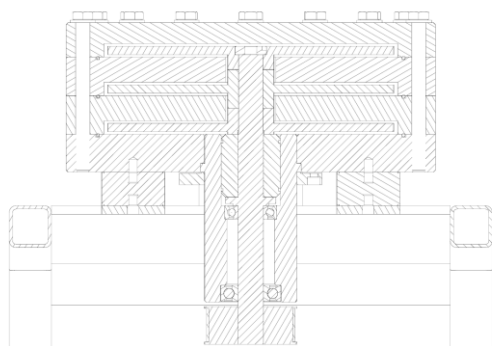




SpinPro R4 Reactor

SpinPro Dynamic Flow Reactors

SpinPro reactors are unique type of flow reactors. They enable the independent control of mixing intensity and throughput. The spinning disc in a narrow housing generates strong and homogeneous shear with a high turbulence intensity, shortening production times from hours in batch to seconds in flow.



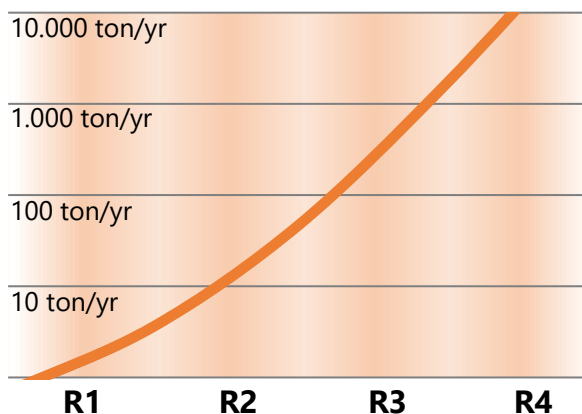
Technical Specifications SpinPro R4

Pressure:	up to 10 barg
Temperature:	-50 °C to 160 °C
Reactor volume:	up to 2,5 L
Compliance:	GMP, ATEX, CE

Proven Technologies

As of 2024, over thirty SpinPro reactors are running in pilot and production plants worldwide, making this your ideal solution for:

- Multiphase reactions (GLS)
- Precipitations and slurries
- Highly exothermic reactions
- Emulsification & polymerisation



Excellent Scalability

The SpinPro reactor range expedites scale-up from R&D to production. Constant performance is maintained during scale-up from R1 to R4.